

austin gray
first floor office 123-125 dyke road, hove, bn3 1tj
Tel: 01273 232232
residential@austingray.co.uk
www.austingray.co.uk

austin gray



11 Springfield Road Brighton, BN1 6DB

A substantial, Victorian, semi-detached, family home measuring 296 sq m/3188 sq ft with off road parking which retains a wealth of character and charm located in the popular Preston Park district of Brighton.

£1,400,000

11 Springfield Road

Brighton, BN1 6DB



Springfield Road lies adjacent to Beaconsfield Road and Ditchling Road, a 10 minute walk from Brighton Mainline Station with northbound commuter links, with nearby London Road Station providing east and westbound connections. The bustling city centre is easily accessible as are schools catering for all age groups. Preston Park is a short walk away providing recreational facilities and green open spaces.

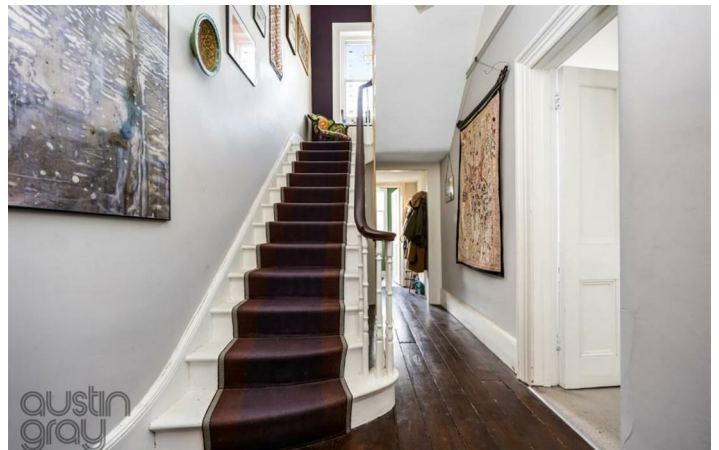
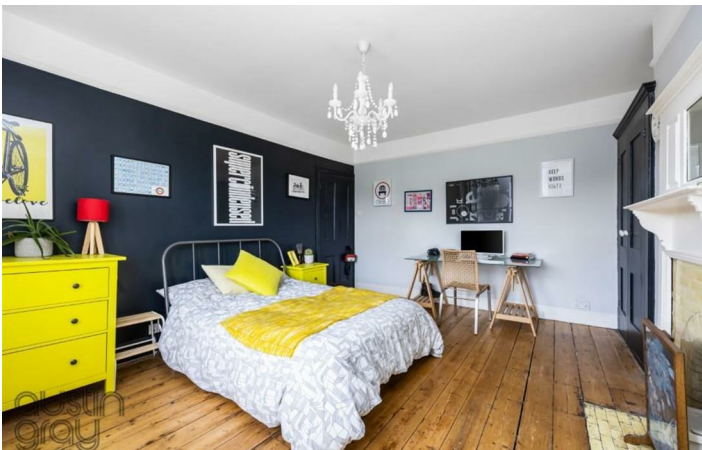
Steps lead up to the front door where upon entry you are immediately greeted with the impressive size and proportions, original character and charm this fabulous house has to offer. On the ground floor are two reception rooms both with fireplaces, high ceilings, ornate cornicing and sash windows. A cloakroom is at the rear alongside a cupboard which houses the combination boiler with mega flow tank. Stairs lead down to the impressive open plan kitchen/dining/ family space which flows from front to back with bi fold doors out to the good sized, lawned garden. The kitchen itself is well equipped with integrated appliances and has a large social island and ample space for large dining table. The living area to the front has a log burner which makes this an ideal entertaining/family space. There is a useful toilet under the stairs, a laundry utility room and access to cellar storage and side access to the driveway.

On the first floor are two double bedrooms, the main bedroom to the front has large built-in wardrobes and en-suite, an additional modern family shower room/WC is also on this floor. Further stairs rise to the second floor where three further bedrooms and a shower room/WC are to be found, plus access to the loft.

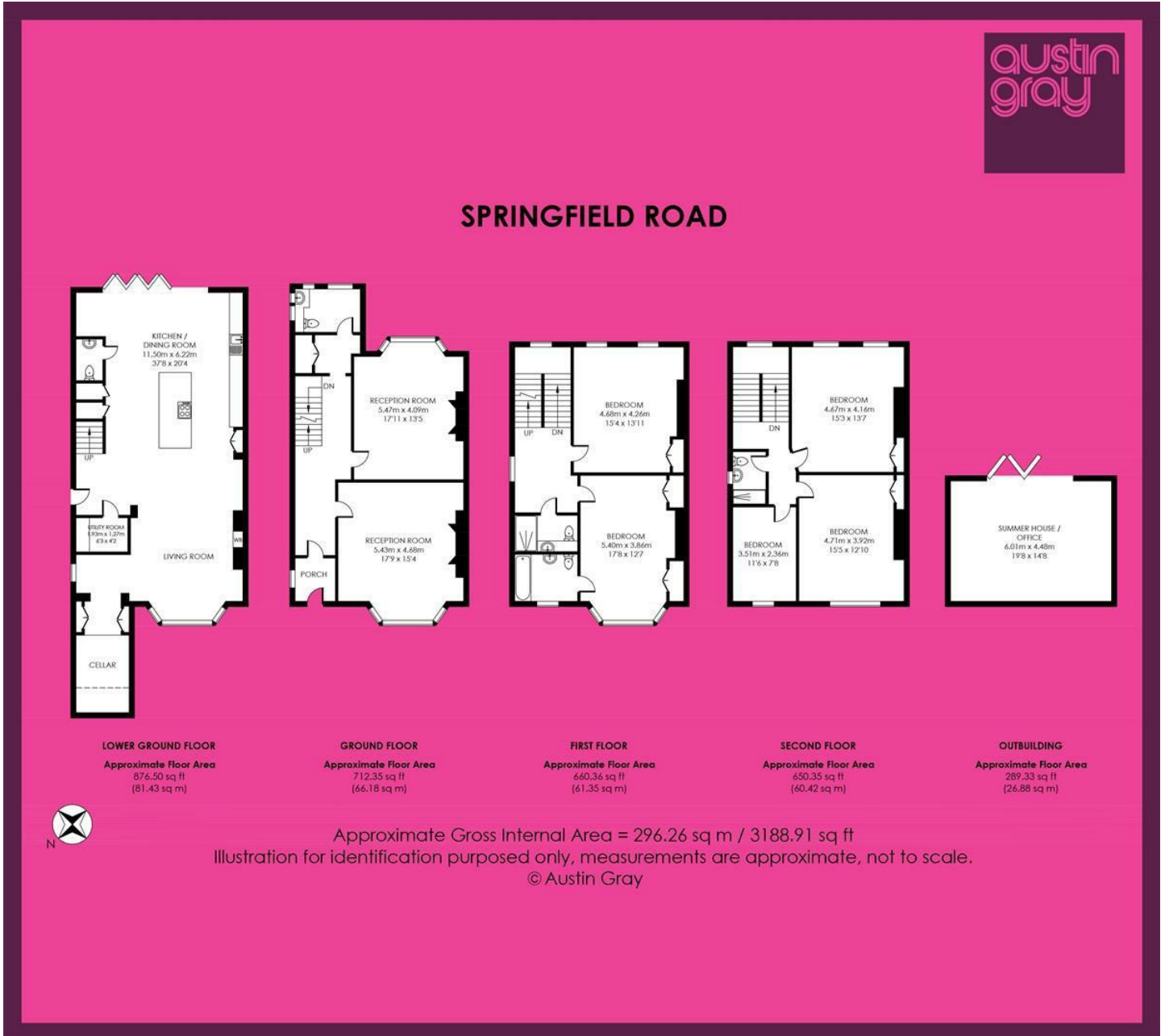
The sizeable garden has a large patio area perfect for al fresco entertaining and a lawned area flanked by trees and shrubs and at the end of the garden is a summer house/home office, currently used as a games room with a snooker table in situ. At the side of the house is gate access to the driveway which provides off road parking for up to three cars.

Houses of this size and standard rarely come to the market and the spacious accommodation provides versatile living to suit today's modern family. Internal viewing is recommended to appreciate the size, proportions and presentation of this sizeable home.





Floor Plan



These particulars, whilst believed to be accurate are set out as a general outline only for guidance and do not constitute any part of an offer or contract. Intending purchasers should not rely on them as statements of representation of fact, but must satisfy themselves by inspection or otherwise as to their accuracy. No person in this firm's employment has the authority to make or give any representation or warranty in respect of the property.

**Council Tax
Band: F**

Energy Efficiency Rating		
Low energy efficient - lower running costs	Current	Potential
A (75-92)		80
B (69-74)		
C (63-68)		60
D (55-62)		
E (49-54)		
F (45-48)		
G (39-44)		
Not energy efficient - higher running costs		
England & Wales		
EU Directive 2002/91/EC		

austin gray
first floor office 123-125 dyke road, hove, bn3 1tj
Tel: 01273 232232
residential@austingray.co.uk
www.austingray.co.uk

austin gray