

austin gray
first floor office 123-125 dyke road, hove, bn3 1tj
Tel: 01273 232232
residential@austingray.co.uk
www.austingray.co.uk

austin gray



7 Russell Crescent

Brighton, BN1 3TH

Guide Price £725,000

**** Contact us for a Virtual Walk Through Viewing ****

A substantial 5 bedroom maisonette spanning three floors measuring 2017 sq ft / 187 sq mtrs with the entire Freehold whilst retaining a wealth of character throughout and conveniently situated to the Seven Dials and short walk to Brighton station.

Russell Crescent is a small tucked away road that is to be found adjacent to Dyke Road and Prestonville Road and is within a moments' walk of Seven Dials with its array of bars, delis, restaurants, and other entertainments. The city centre, seafront and promenade are easily accessible as is Brighton station providing its northbound commuter links to London / The City as well as east and westbound connections.

Brought to the market in immaculate order throughout, this bright and spacious beautiful family home retains a wealth of character and charm as evidenced by its many fireplaces, corniced ceilings, ornate roses, stripped wooden floors and period style radiators throughout. A South facing sitting room has a full length, secondary glazed sash bay window to the front overlooking its balustrade balcony, whilst leading through to a well-equipped modern kitchen / dining room to the rear. Five bedrooms span the first and second floors, with a beautiful family bathroom and a separate shower on a half landing. In addition, a shower room/WC is located on the ground floor along with a separate utility room.

Viewing

Please contact our Austin Gray Residential Office on 01273 232232

If you wish to arrange a viewing appointment for this property or require further information



Floor Plan

Russell Crescent



Ground Floor
Approximate Floor Area
711.81 sq ft
(66.13 sq m)

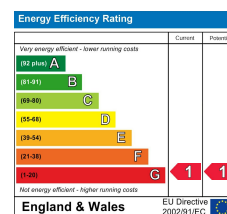
First Floor
Approximate Floor Area
703.95 sq ft
(65.40 sq m)

Second Floor
Approximate Floor Area
601.70 sq ft
(55.90 sq m)

Approximate Gross Internal Area = 187.43 sq m / 2037.48 sq ft
Illustration for identification purposes only, measurements are approximate, not to scale.
Copyright GDImpact 2020

Area Map

Energy Efficiency Graph

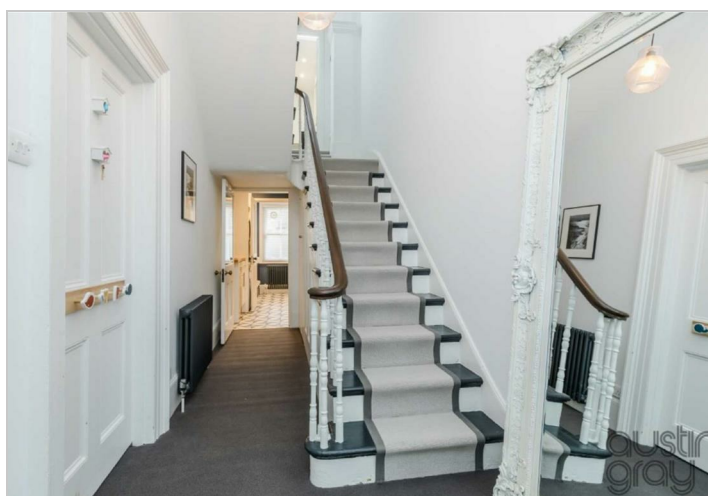


austin gray

For virtual walk through viewing, contact

01273 232232

property@austingray.co.uk



These particulars, whilst believed to be accurate are set out as a general outline only for guidance and do not constitute any part of an offer or contract. Intending purchasers should not rely on them as statements of representation of fact, but must satisfy themselves by inspection or otherwise as to their accuracy. No person in this firm's employment has the authority to make or give any representation or warranty in respect of the property.

austin gray

first floor office 123-125 dyke road, hove, bn3 1tj

Tel: 01273 232232

residential@austingray.co.uk

www.austingray.co.uk

austin gray