

austin gray
first floor office 123-125 dyke road, hove, bn3 1tj
Tel: 01273 232232
residential@austingray.co.uk
www.austingray.co.uk

austin gray



57a Rugby Place

Brighton, BN2 5JB

£325,000

*****Contact us for virtual tour*****

*** Cash Buyers Only ***A two bedroom redbrick, mid-terraced home in need of general modernisation throughout whilst offering the opportunity to extend subject to any consents required.

Viewing

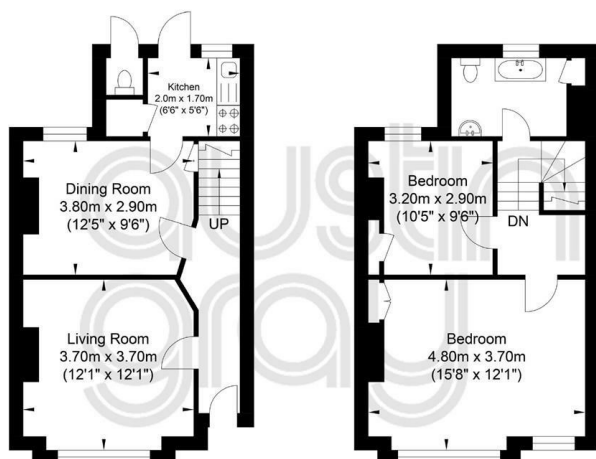
Please contact our Austin Gray Residential Office on 01273 232232

if you wish to arrange a viewing appointment for this property or require further information



Floor Plan

Rugby Place, Brighton

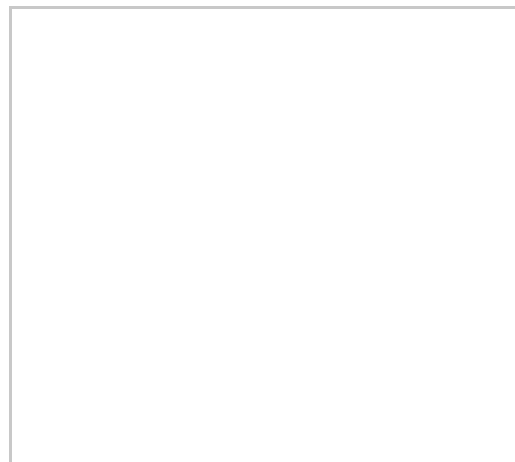


Ground Floor
Approximate Floor Area
382.65 sq ft
(35.55 sq m)

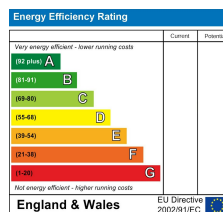
First Floor
Approximate Floor Area
391.16 sq ft
(36.34 sq m)

Approximate Gross Internal Area = 71.89 sq m / 773.81 sq ft
Illustration for identification purposes only, measurements are approximate, not to scale.
Copyright GDImpact 2020

Area Map



Energy Efficiency Graph



austin gray

For virtual walk through viewing, contact

01273 232232

property@austingray.co.uk



These particulars, whilst believed to be accurate are set out as a general outline only for guidance and do not constitute any part of an offer or contract. Intending purchasers should not rely on them as statements of representation of fact, but must satisfy themselves by inspection or otherwise as to their accuracy. No person in this firm's employment has the authority to make or give any representation or warranty in respect of the property.

austin gray

first floor office 123-125 dyke road, hove, bn3 1tj

Tel: 01273 232232

residential@austingray.co.uk

www.austingray.co.uk

austin gray