

austin gray
first floor office 123-125 dyke road, hove, bn3 1tj
Tel: 01273 232232
residential@austingray.co.uk
www.austingray.co.uk

austin gray



37 Wilbury Crescent

Hove, BN3 6FJ

Offers In Excess Of £950,000

***** Contact us for virtual walk through viewing*****

A substantial, semi-detached, 5 bedroom family home measuring 2753 sq ft/255 sq m lending itself to some modernisation and updating whilst benefitting from off-road parking with a large, south-facing, rear garden.

Viewing

Please contact our Austin Gray Residential Office on 01273 232232

If you wish to arrange a viewing appointment for this property or require further information



5



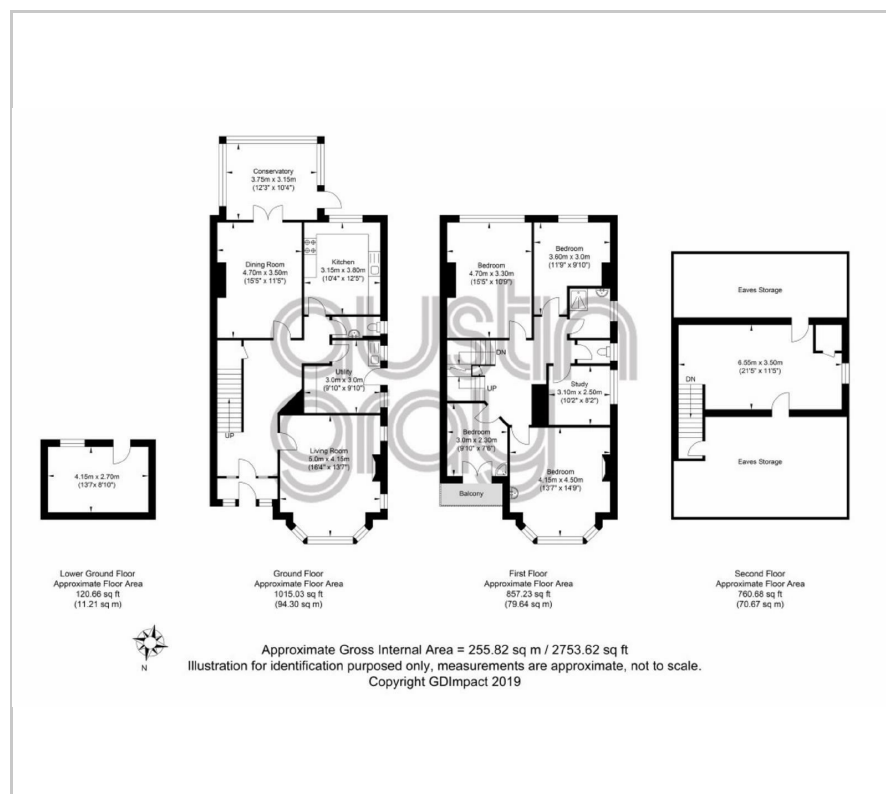
1



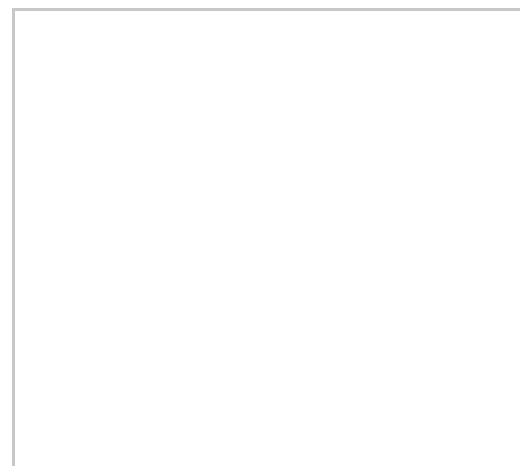
null



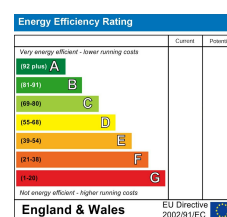
Floor Plan



Area Map



Energy Efficiency Graph



austin gray

For virtual walk through viewing, contact

01273 232232

property@austingray.co.uk



These particulars, whilst believed to be accurate are set out as a general outline only for guidance and do not constitute any part of an offer or contract. Intending purchasers should not rely on them as statements of representation of fact, but must satisfy themselves by inspection or otherwise as to their accuracy. No person in this firm's employment has the authority to make or give any representation or warranty in respect of the property.

austin gray
first floor office 123-125 dyke road, hove, bn3 1tj
Tel: 01273 232232
residential@austingray.co.uk
www.austingray.co.uk

austin gray